

Product description

GEU 390 AC is a ventilation unit, equipped with counter current heat exchanger, supply and extraction fan, EU4 extraction plan filter, EU7 supply bag filter, complete automatic functions and control panel.

GEU 390 AC may be delivered with the following accessories:

- Water- or electric-post-heating surface for \varnothing 125mm duct
- Fresh air damper, with a spring return motor for \varnothing 125mm duct
- Fresh air damper with a motor for \varnothing 125mm duct
- Exhaust damper with a motor for \varnothing 125mm duct
- Thermostat valve with an air sensor
- Two way valve with a motor 24 V

Utilization

GEU 390 AC is used in ventilation units wanting extraction and supply, while gaining the energy from the extract air in order to heat the supply air. GEU 390 AC is normally used in homes with an area of app. 50 to 180 square metres.



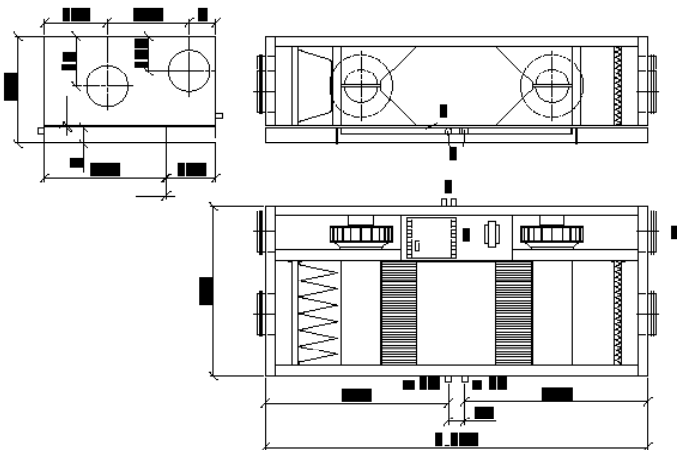
Types

By interchanging the filters, the GEU 390 AC may be laterally reversed provided that an expert interchanges the wires controlling the ventilators.

Dimension sketch

GEU 390 AC

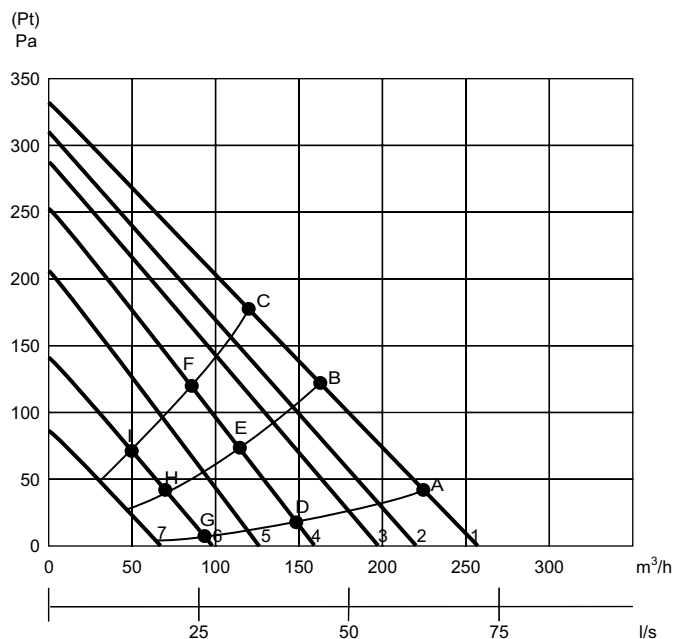
Dimensions in mm



- | | |
|-----------------------------------|--------------------------|
| 1: Fresh air (outdoor air) | 8: Fresh air filter EU 7 |
| 2: Exhaust | 9: Extract filter EU 4 |
| 3: Extract | 10: Electric control |
| 4: Supply | 11: Wire passage |
| 5: Counter current heat exchanger | 12: Condensate tray |
| 6: Supply fan | 13: Condensate drain |
| 7: Extract fan | |

Performance

The performance diagram shows the pressure (P_t) available for the duct system on both extract and supply. Pressure loss in unit has been deducted.



Technical data

Power supply

1 x 230 V + N + PE, 10 A, 50 Hz

Fans with direct-driven motors

R2E 190

Condenser

2,0 µF

Motors 230 V AC:

Normmotors

IEC 38

Insulation class

B

Density class

IP 44

Motor capacity (Max. per motor)

Rpm

2500 at 50Hz

2700 at 60Hz

Current input (Max. per motor)

58W

Power consumption (Max. per motor)

0,26A

Individually, the fans may be set to 3 various speeds.

Sound data

Measuring point	1 m beneath unit			Extraction duct			Supply duct			
	Airflow	1	2	3	1	2	3	1	2	3
		Lo dB			Lwu dB			Lwi dB		
63 Hz		39	47	50	74	86	91	74	86	91
125 Hz		39	44	48	72	81	88	72	81	88
250 Hz		33	41	47	66	77	84	66	77	84
500 Hz		26	34	42	58	72	79	58	72	79
1000 Hz		-	25	33	53	66	74	53	66	74
2000 Hz		-	-	24	45	62	71	45	62	71
4000 Hz		-	-	22	33	53	64	33	53	64
8000 Hz		-	-	-	27	41	54	27	41	54
Average		Lo dB(A)			Lwu dB(A)			Lwi dB(A)		
		29	36	42	61	73	81	61	73	81

1: Measured at 30% and an airflow of 90 m³/h

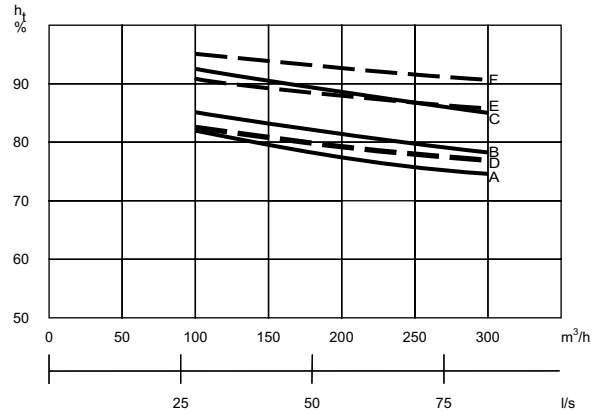
2: Measured at 50% and an airflow of 230 m³/h

3: Measured at 100% and an airflow of 330 m³/h

Automatic

GEU 390 AC is delivered with complete automatic functions.

Temperature efficiency



	°C	A	B	C	D	E	F
Exhaust	°C	20	20	20	20	20	20
Relative humidity	%	30	50	70	30	50	70
Outdoor air	°C	4	4	4	-12	-12	-12

Possible icing up of the heat exchanger at low outdoor temperatures, has not been taken into account.

Construction

Main dimensions:

(h x l x d) ex. connecting pieces

520 x 1162 x 307 mm

Cabinet construction:

Fully closed hot galvanised plate with 30 mm insulation.

(Powder coating is possible).

Duct connection:

ø125 mm (nipple size) with rubber ring seal

Cover:

Cover with 6 mm screws and snap bolts on the filter cover

Counter current heat exchanger

Pure aluminium, seawater resistant

Condensation tray

Stainless steel

Condensation drain

Stainless connecting pieces ø15 mm

Filters:

Supply

EU7 bag filter

Extraction

EU4 plan filter

Weight

40 kg

Accessories

Water and electric post heating surfaces and damper.